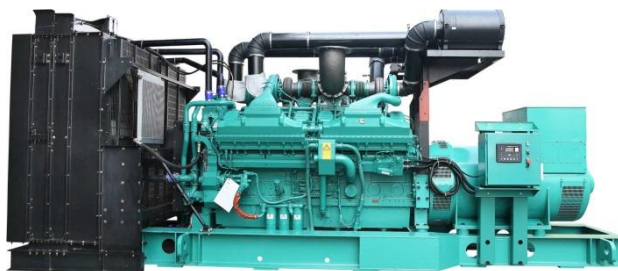


DATA SHEET

DIESEL GENERATOR 2000KW
MODEL#FDK-CG2500EV1/H1
50HZ/1500RPM
CUMMINS MODEL: QSK60-G8



General Features:

- ♦ All qualified generator sets are subjected to a comprehensive performance test which includes 50% load, 70% load, 100% load, 110% load and to check, verify that all control systems, alarm and shut-down protection.
- ♦ Equipped with battery charger and 24V high performance maintenance-free lead-acid starting batteries and connecting cables.
- ♦ Stainless galvanized zinc plates with strong corrosion-proof.
- ♦ Vibration isolators between the engine/alternator and base frame.
- ♦ Equipped with industrial silencer and flexible exhaust hose.
- ♦ Designed to comply with ISO8528/GB2820.
- ♦ Powered by Cummins engine and coupled with Stamford alternator.
- ♦ Water jacket preheater, oil heater and double air cleaner, etc. are available.

FDK Diesel Generator Set Data

| | | | |
|--------------------------------|------------------|------------------|--------------------|
| Genset Model | FDK-CG2500EV1/H1 | Engine Made | Cummins UK |
| Prime Power | 1800KW/2250KVA | Engine Model | QSK60-G8 |
| Standby Power | 2000KW/2500KVA | Alternator model | Stamford S7L1D-H41 |
| Output Frequency / Rated speed | 50Hz/1500rpm | Control System | DSE7320 |
| Rated Voltage | 230V/400V | Phase | Three |

(1) **Prime power:** The rating is available for an unlimited of annual operating hours in variable load applications, in accordance with ISO8528-1.A 10% overload is available for a period of 1 hour within 12-hour period of operation, in accordance with ISO 3046-1.

(2) **Standby power:** The rating is applicable for supplying emergency power in variable load applications for up to 200 hours per year in accordance with ISO8528-1. Overload is not allowed.

(3) **Rated voltage:** available with customer requirement.

Engine Specifications (DETAILED in APPENDIX)

| | | | |
|----------------------|------------------------|-------------------------------|---------------|
| Engine Model | QSK60-G8 | Aspiration | Turbo-charged |
| Engine Manufacturer | Cummins ORIGINAL UK | Bore x Stroke (mm x mm) | 159×190 |
| Cylinder quantity | 16 | Displacement | 60.2L |
| Cylinder Arrangement | 60° Vee | Compression Ratio | 14.5:1 |
| Cycle | 4 | Prime power / Speed (KW/RPM) | N.A. |
| | | Standby power/ Speed (KW/RPM) | 2145kw/1500 |



ISO9001:2015FDK reserves the right to change the specifications and designs without notice.

| | | | |
|-----------------------------------|-----------------|--|----------------|
| Type Injection System | Cummins MCRS | Fuel Consumption at 100% load (L/H) | 500Lat 1500rpm |
| Piston Speed | 9.5m/s | Starter motor | DC24V |
| Friction Energy Output | 146kw | Low idle | 700-900pm |
| Total Lubrication System Capacity | 195L | Coolant Capacity (L) | 159 |

Alternator Specifications

| | | | |
|--------------------------|---|--------------------------|---|
| Alternator model | S7L1D-H41 | Number of phase | 3 |
| Alternator manufacturer | STAMFORD | Rated voltage | 400V (Available with custom requirements) |
| Exciter type | Single bearing, Brushless, Self-excited | Power factor | 0.8 |
| Rated output prime power | 2250KVA | Voltage regulation NL-FL | ≤±1% |
| Rated speed | 1500 rpm | Insulation grade | H |
| Rated frequency | 50Hz | Protection grade | IP23 |

Alternator option: Leroy Somer, MECC, Marathon, Engga, Faraday

Control System DSE7320 (DETAILED in INSTRUCTION)

DSE7320 is an advanced control module based on micro-processor, containing all necessary functions for protection of the genset and the breaker control. It can monitor the mains supply, breaker control and automatically start the engine when the mains are abnormal. Accurately measure various operational parameters and display all values and alarms information on the LCD. In addition, the control module can automatically shut down the engine and indicate the engine failure.

FEATURES

- ♦ Microprocessor control, with high stability and credibility.
- ♦ Monitoring and measuring operational parameters of the mains supply and genset.
- ♦ Indicating operation status, fault conditions, all parameters and alarms.
- ♦ Multiple protections; multiple parameters display, like pressure, temp. etc.
- ♦ Manual, automatic and remote work mode selectable.
- ♦ Real time clock for time and date display, overall runtime display, 250 log entries.
- ♦ Overall power output display.
- ♦ Integral speed/frequency detecting, telling status of start, rated operation, overspeed etc.
- ♦ Communication with PC via RS485 OR RS232 interface, using MODBUS protocol.

Soundproof Enclosure Specification

FDK silent generator is designed by professional acoustic engineers based on years of experience. Now we can make the noise of the generator less than 80-85dB(A) at 1m, or 70-75dB(A) at 7m, 60-65dB(A) at 15m.

FEATURES

- ♦ Multi-way air intake and exhaust guarantee the power performance of the generator.
- ♦ Large-scale impedance combined type silencer effectively reduce noise of the generator.
- ♦ Internal high performance rubber damper and flexible materials reduce vibration.
- ♦ Base mounted fuel tank supports the generator running for 8 hours.



ISO9001:2015FDK reserves the right to change the specifications and designs without notice.

Optional

| Generator set | Alternator | Low environment Temp | ATS |
|---|---|---|--|
| <input type="checkbox"/> Open generator set <input type="checkbox"/> Silent generator set <input type="checkbox"/> Trailer generator set <input type="checkbox"/> ABB MCCB circuit breaker | <input type="checkbox"/> Stamford <input type="checkbox"/> Marathon <input type="checkbox"/> Mecc Alte <input type="checkbox"/> Leroy Somer <input type="checkbox"/> Farady <input type="checkbox"/> Engga | <input type="checkbox"/> Water heater <input type="checkbox"/> Oil heater <input type="checkbox"/> Battery heater | <input type="checkbox"/> CHINT <input type="checkbox"/> SCHNEIDER <input type="checkbox"/> ABB |
| Fuel system | Control system | Voltage | Synchronized system |
| <input type="checkbox"/> 12hrs base tank <input type="checkbox"/> 24hrs base tank <input type="checkbox"/> Dual wall base fuel tank <input type="checkbox"/> Outside fuel tank | <input type="checkbox"/> AMF function <input type="checkbox"/> ATS control cabinet <input type="checkbox"/> DSE7320 <input type="checkbox"/> DSE7510 <input type="checkbox"/> GU620A | <input type="checkbox"/> 415/240V <input type="checkbox"/> 400/230V <input type="checkbox"/> 380/220V <input type="checkbox"/> 220/127V <input type="checkbox"/> 200/115V | <input type="checkbox"/> CHINT Cabinet <input type="checkbox"/> SCHNEIDER Cabinet <input type="checkbox"/> DSE8610 Module <input type="checkbox"/> COMAQ Module <input type="checkbox"/> DEIF Module |

Dimension & Weight

Open

| | |
|-----------------------------|----------------|
| Overall Size: L×W×H (mm) | 5850×2630×2826 |
| Weight (kg) | 14800 |

Soundproof Version

| | |
|-----------------------------|----------------|
| Overall Size: L×W×H (mm) | 8500X3000X3300 |
| Weight (kg) | 21800 |

Sales Promises

- ◆ FDK provides a full line of brand new and high quality products. Each and every unit is strictly factory tested before shipment.
- ◆ Quality warranty is according to our standard conditions: 12 months from BL date or 1000 running hours, whichever comes first.
- ◆ Service and parts are available from FDK or distributors in your location.
- ◆ FDK guarantee use **BRAND NEW & GENUINE MACHINE.**