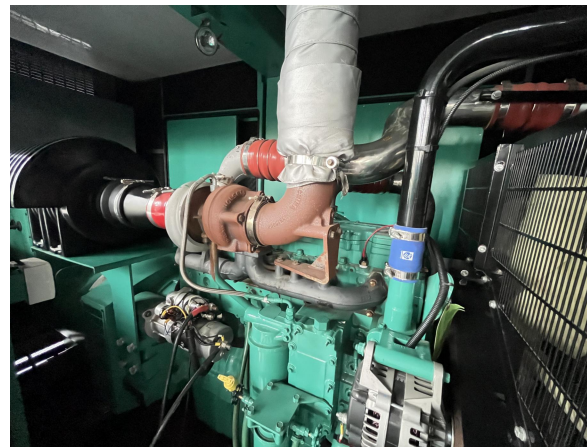
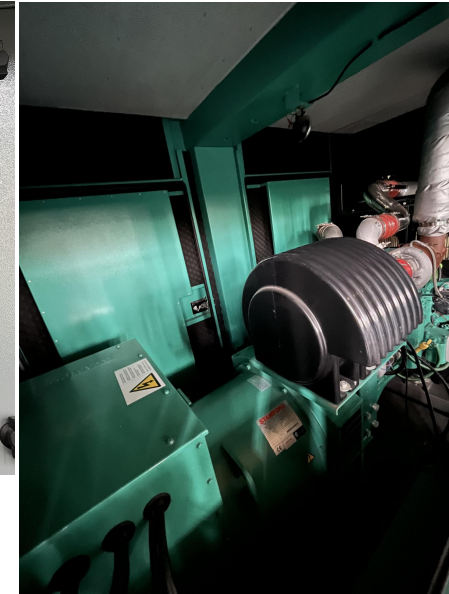


# FuDianKang

Genset Power:	Standby power:300KVA/240KW Prime power: 275KVA/220KW
Type:	Silent type with canopy
Engine Model:	Cummins QSL9-G7
Engine Serial No.:	74837744
Engine Power:	—
Engine Date:	08/2021
Engine Running Time:	—
Alternator Model:	Stamford: HC.I444D1
Alternator Serial No.:	X16E215632
Alternator Date:	05/2016
Control Panel:	DSE7320
Breaker:	CHINT: NM1-630S/3300, 50HZ, 630A, 400V
Water Tank:	CU/ 40°C
Other Information:	400V/ 50HZ/ 1500rpm/ 3 phase
Repair Report:	—
Size (LxWxH):	4040x1400x2200
Weight:	—



STAMFORD			
SERIAL NUMBER	X16E215632	DUTY	CONTINUOUS (S11)
FRAME/CORE	HC.I444D1	EXCITATION VOLTAGE	40.0
BASE RATING KVA	300.0(GR)	EXCITATION CURRENT	2.2
BASE RATING KW	240.0	INSULATION CLASS	CLASS H
AMPERES BR	455.0	AMBIENT TEMPERATURE	40.0
FREQUENCY	50 HERTZ	TEMPERATURE RISE	125 K
RPM	1500	THERMAL CLASSIFICATION	180(H)
VOLTAGE	380	ENCLOSURE	IP23
PHASE	3	STATOR WINDING	311
PF	0.80	STATOR CONNECTION	SERIES STAR

BS 5000, PART 3 IEC 60034-1 ISO 8528-3  
NEMAMG 1-32 BS EN 60034-1

CE      UL 1446 Info:      AMF0546B      LR 11305  
STAMFORD®      UL File: CBJY2, E195471      ENCLOSURE TYPE: DPGD  
Designation: H, UL 1446      Factory ID Code: XJ

